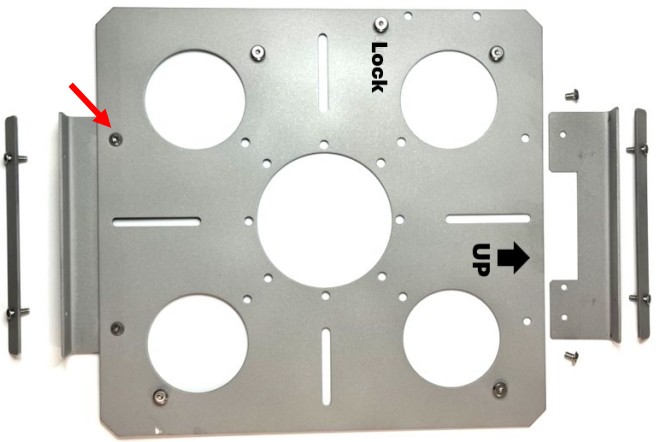
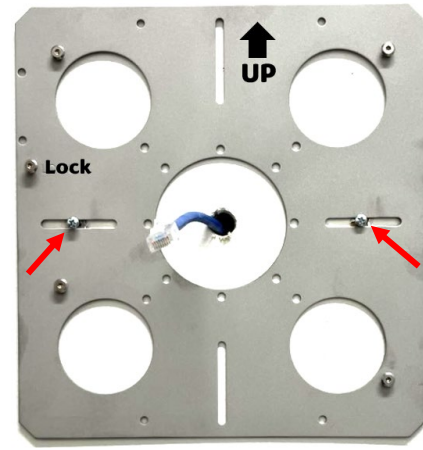


ZVD2300 Wireless Installation Guide (Standard Wall/Ceiling Mount)

1 If installing the optional protective wire cage, fasten both brackets with 4 screws using a T10 Torx security bit.



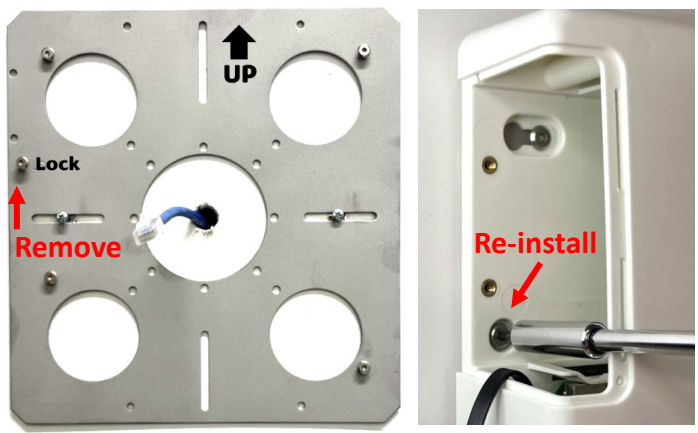
2 Fasten baseplate to the wall, ceiling, or electrical box. Note "UP" orientation on wall installation.



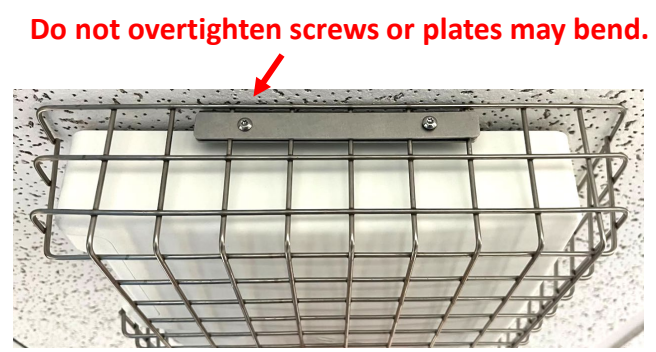
3 If you are NOT using the main battery as a power source, plug in PoE (power over ethernet) cable or 5VDC USB power.



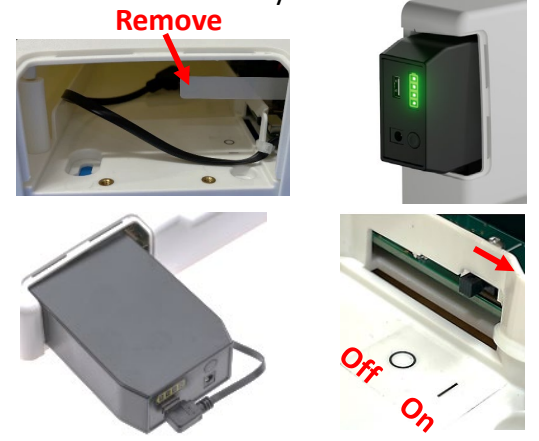
4 Remove locking screw and battery door. Slide device onto baseplate mounts and re-install locking screw.



5 Install optional wire cage and both locking plates using a T10 Torx security bit.

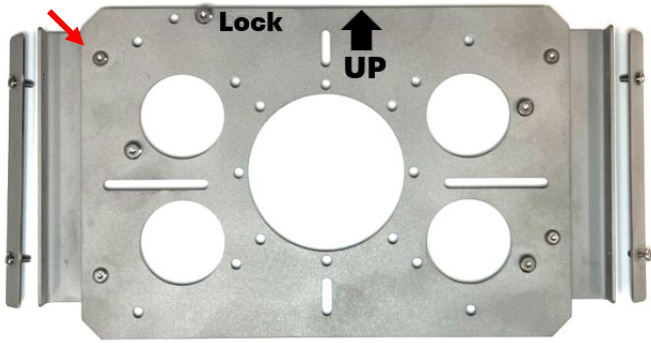


6 Remove battery tab (if installed). Install a fully charged battery, plug in the USB cable, **TURN DEVICE ON** and install battery door.

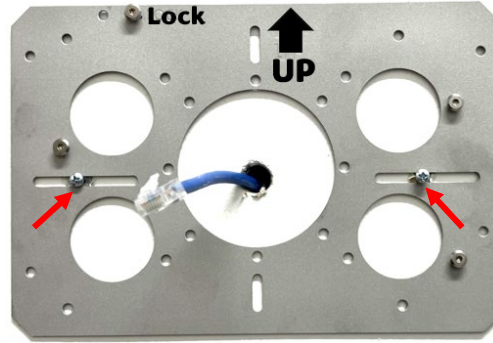


ZVD2200 Wired Installation Guide (Standard Wall/Ceiling Mount)

1 If installing the optional protective wire cage, fasten both brackets with 4 screws using a T10 Torx security bit.



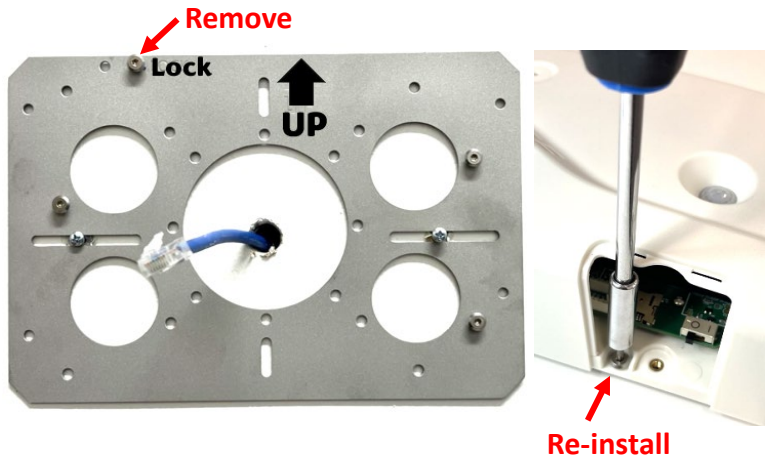
2 Fasten baseplate to the wall, ceiling, or electrical box. Note "UP" orientation on wall installation.



3 Plug in a PoE (power over ethernet) cable or 5VDC USB power.



4 Remove locking screw and access door. Slide device onto baseplate mounts and re-install locking screw.



5 Install optional wire cage and both locking plates using a T10 Torx security bit.



Do not overtighten screws or plates may bend.

6 Remove battery tab (if installed). **TURN DEVICE ON** and re-install access door.

