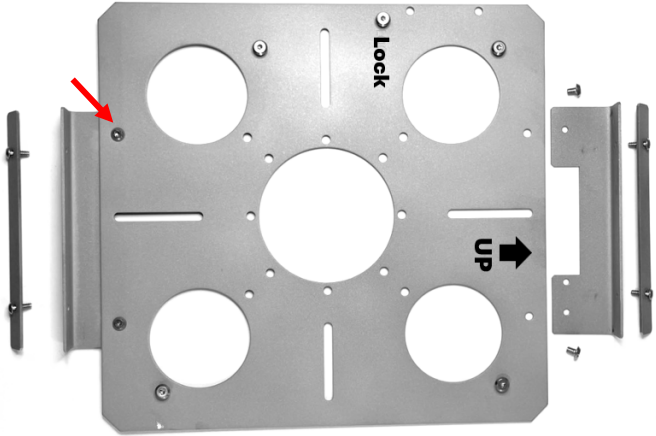
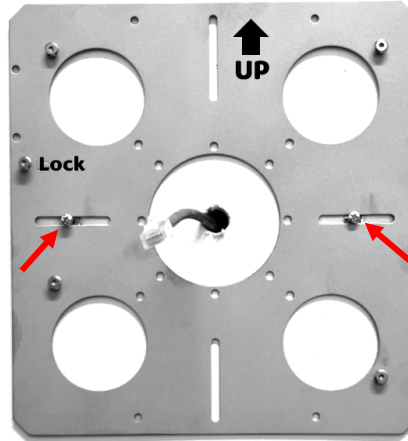


ZVD2300 Wireless Installation Guide (Standard Wall/Ceiling Mount)

- 1** If installing the optional protective wire cage, fasten both brackets with 4 screws using a T10 Torx security bit.



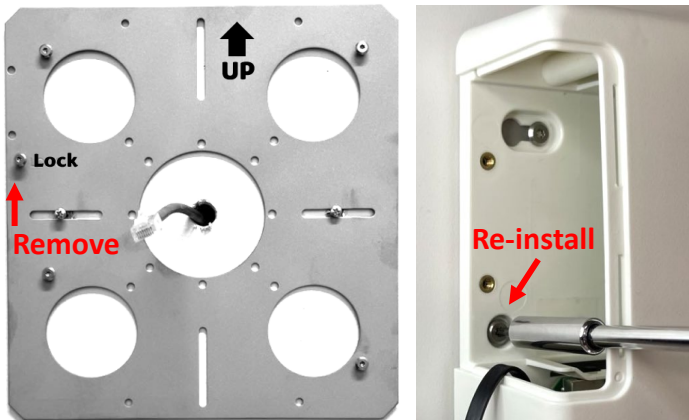
- 2** Fasten baseplate to the wall, ceiling, or electrical box. Note "UP" orientation on wall installation.



- 3** If you are NOT using the main battery as a power source, plug in PoE (power over ethernet) cable or 5VDC USB power.

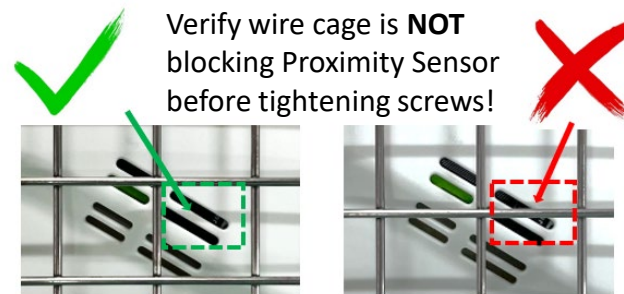


- 4** Remove locking screw and battery door. Slide device onto baseplate mounts and re-install locking screw.

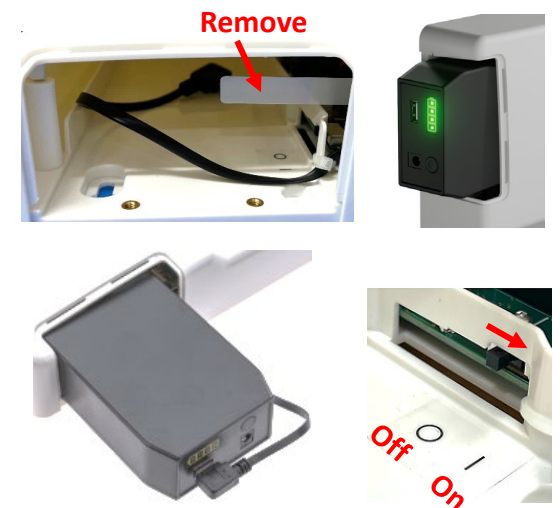


- 5** Install optional wire cage and both locking plates using a T10 Torx security bit.

Do not overtighten screws or plates may bend.

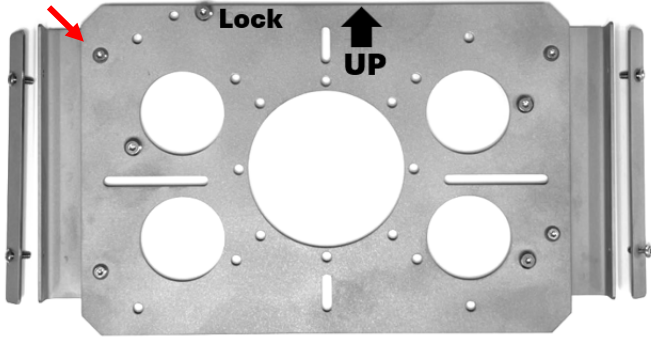


- 6** Remove battery tab (if installed). Install a fully charged battery, plug in the USB cable, **TURN DEVICE ON** and install battery door.

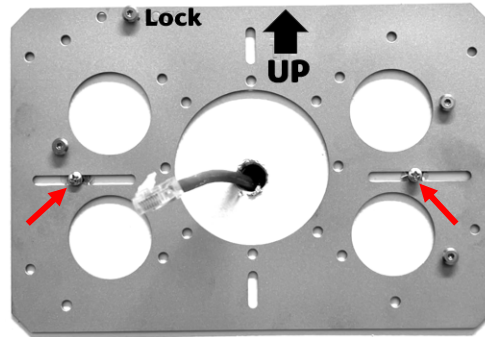


ZVD2200 Wired Installation Guide (Standard Wall/Ceiling Mount)

- 1** If installing the optional protective wire cage, fasten both brackets with 4 screws using a T10 Torx security bit.



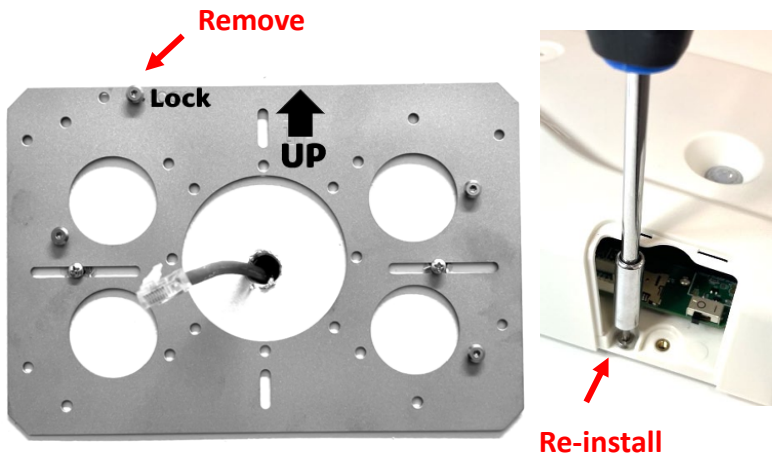
- 2** Fasten baseplate to the wall, ceiling, or electrical box. Note "UP" orientation on wall installation.



- 3** Plug in a PoE (power over ethernet) cable or 5VDC USB power.



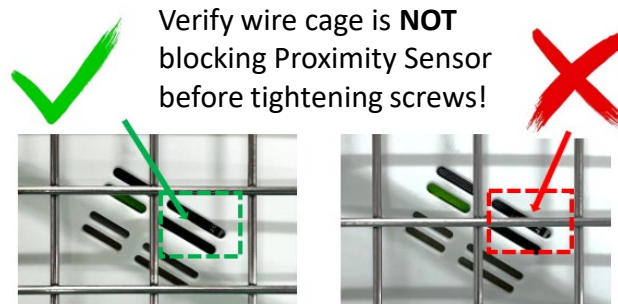
- 4** Remove locking screw and access door. Slide device onto baseplate mounts and re-install locking screw.



- 5** Install optional wire cage and both locking plates using a T10 Torx security bit.



Do not overtighten screws or plates may bend.



- 6** Remove battery tab (if installed). **TURN DEVICE ON** and re-install access door.

